

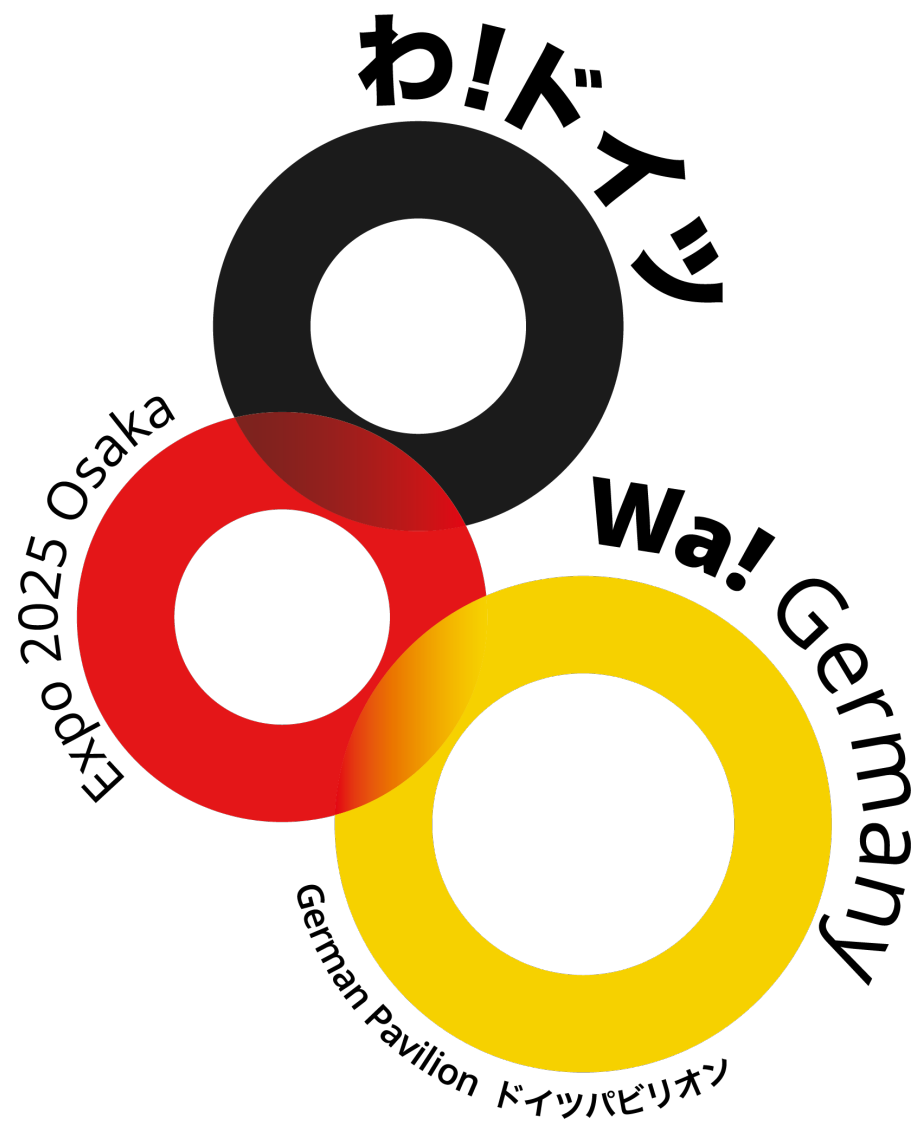
An architectural rendering of the WA! Germany pavilion at Expo 2025. The pavilion is a circular building with multiple levels, each featuring a lush green roof. The building is surrounded by a dense forest of tall trees. In the foreground, there is a paved plaza with several people walking and sitting at outdoor tables. The Japanese text 'わ!ドイツ' is visible on the upper level of the pavilion. The overall scene is set during the day, with soft lighting and shadows.

WA! GERMANY GERMANY AT EXPO 2025

**It's all about circularity.
On all levels. In all areas.**



„circle“
„harmony“
„wow“



MEET THE CIRCULARS





*Hey!
Welcome to the
German Pavilion.
It's a HUGE
pleasure to meet
you.*



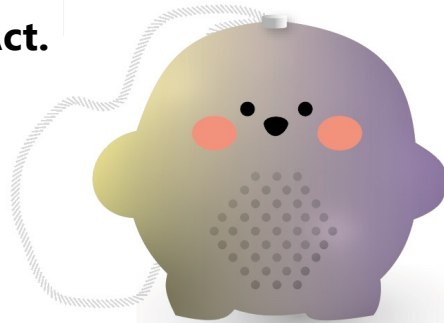
Not one mascot, but many.



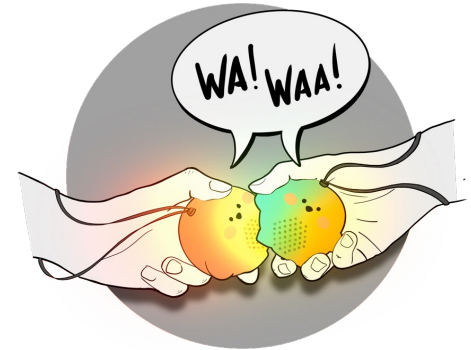
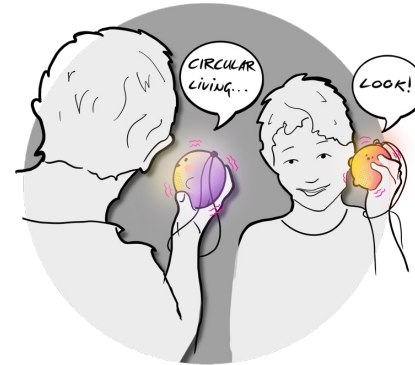
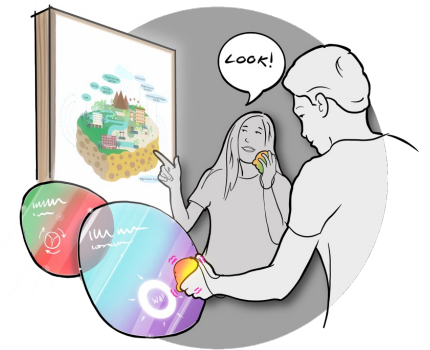
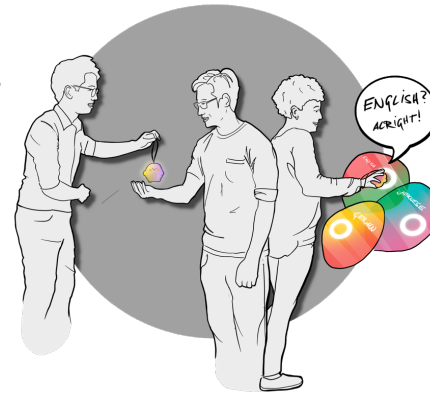
As Walking Act.



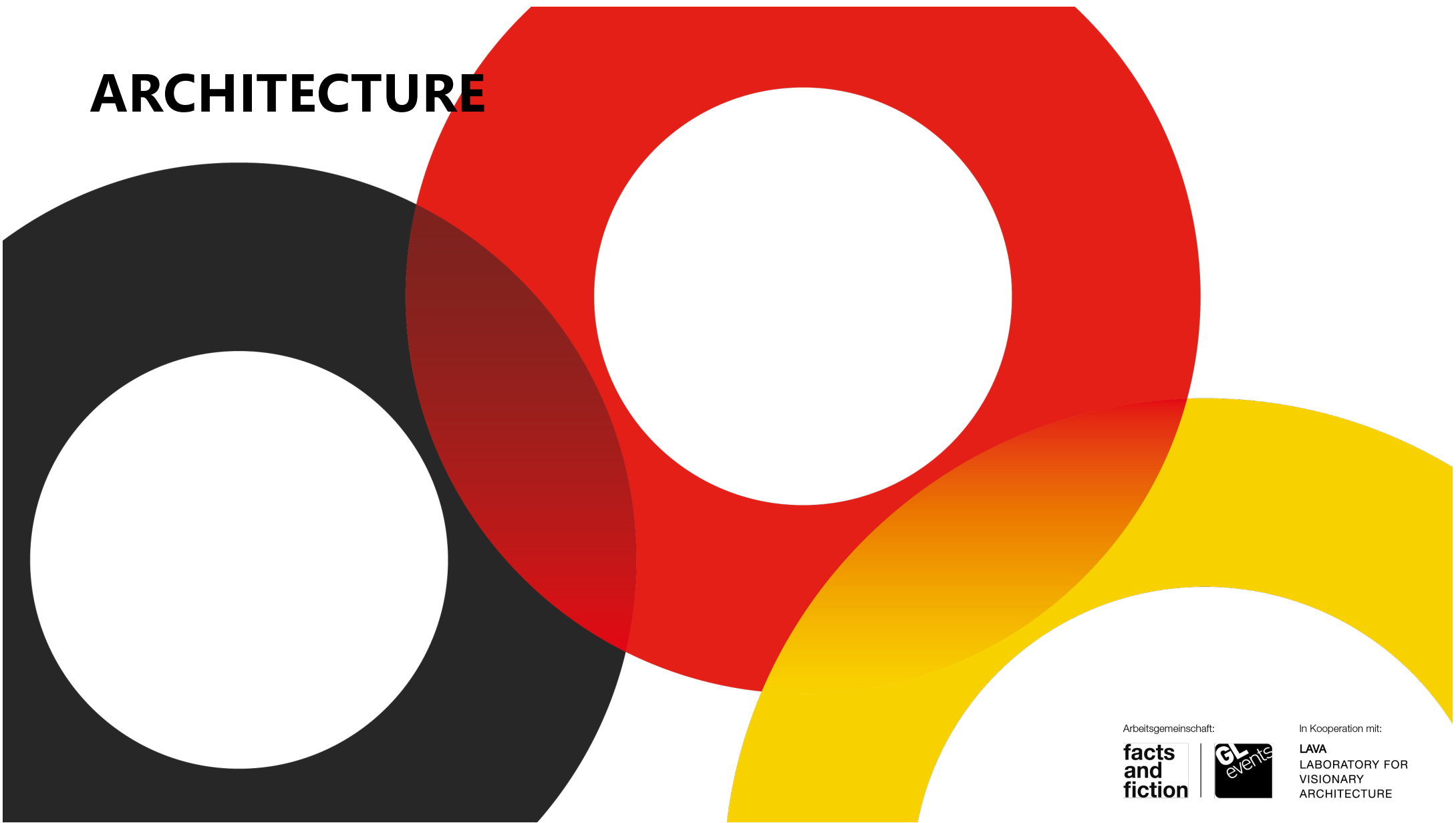
As graphical companion.



As interactive guide.



ARCHITECTURE



Arbeitsgemeinschaft:

**facts
and
fiction**



In Kooperation mit:

LAVA
LABORATORY FOR
VISIONARY
ARCHITECTURE

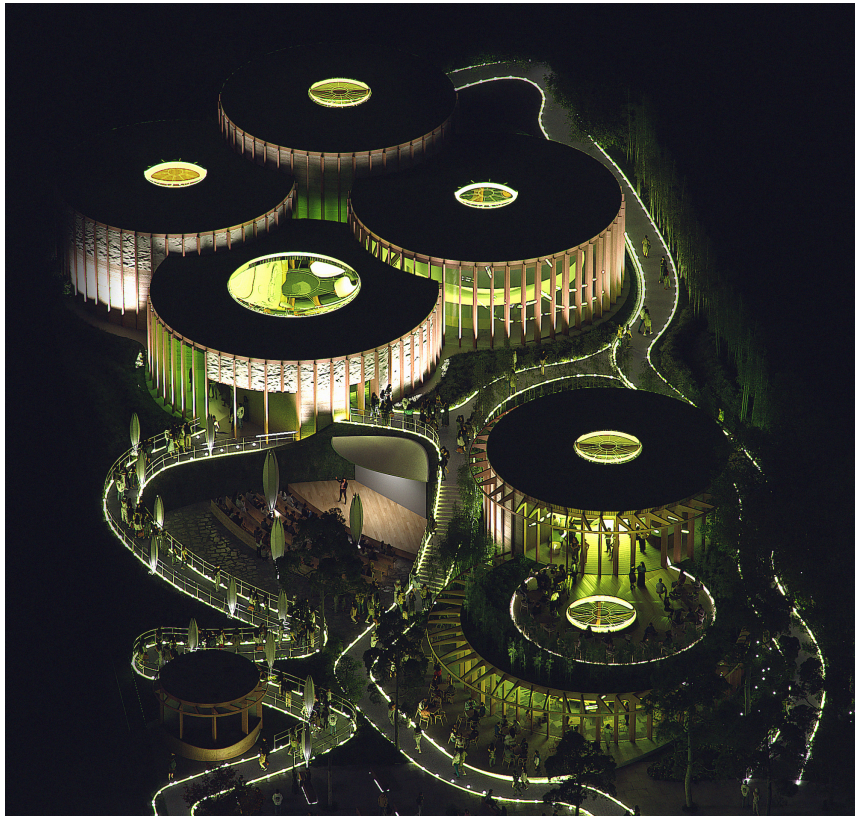
CIRCULAR CONSTRUCTION

The German Pavilion as a Prototype



HOLISTIC MAN MADE ENVIRONMENT

Integration of Biosphere and
Technosphere



AN ENSEMBLE OF BUILDINGS

Ephemeral. Poetic. Sustainable



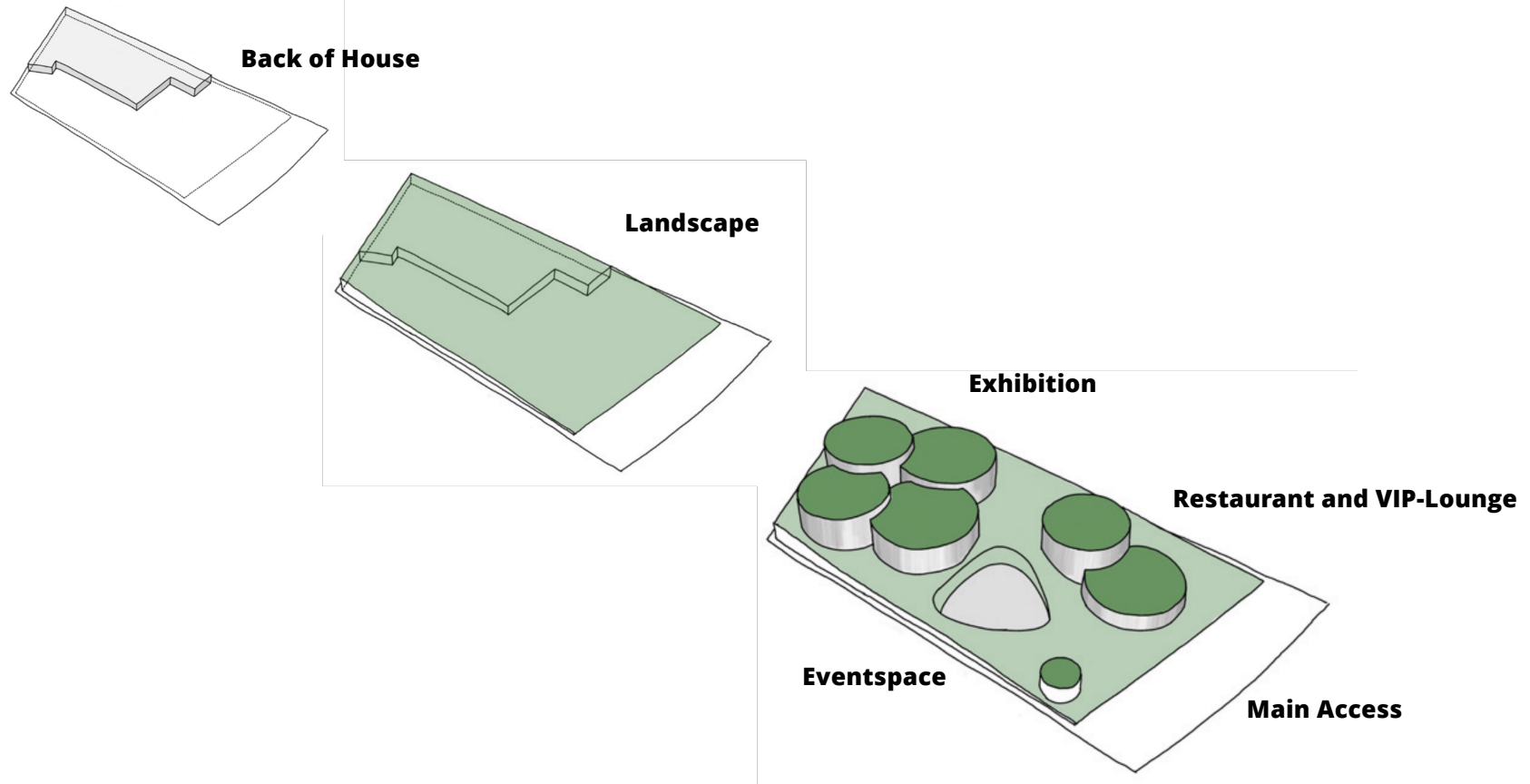
A CIRCULAR AESTHETIC

Poetic spaces combine
construction, space and experience



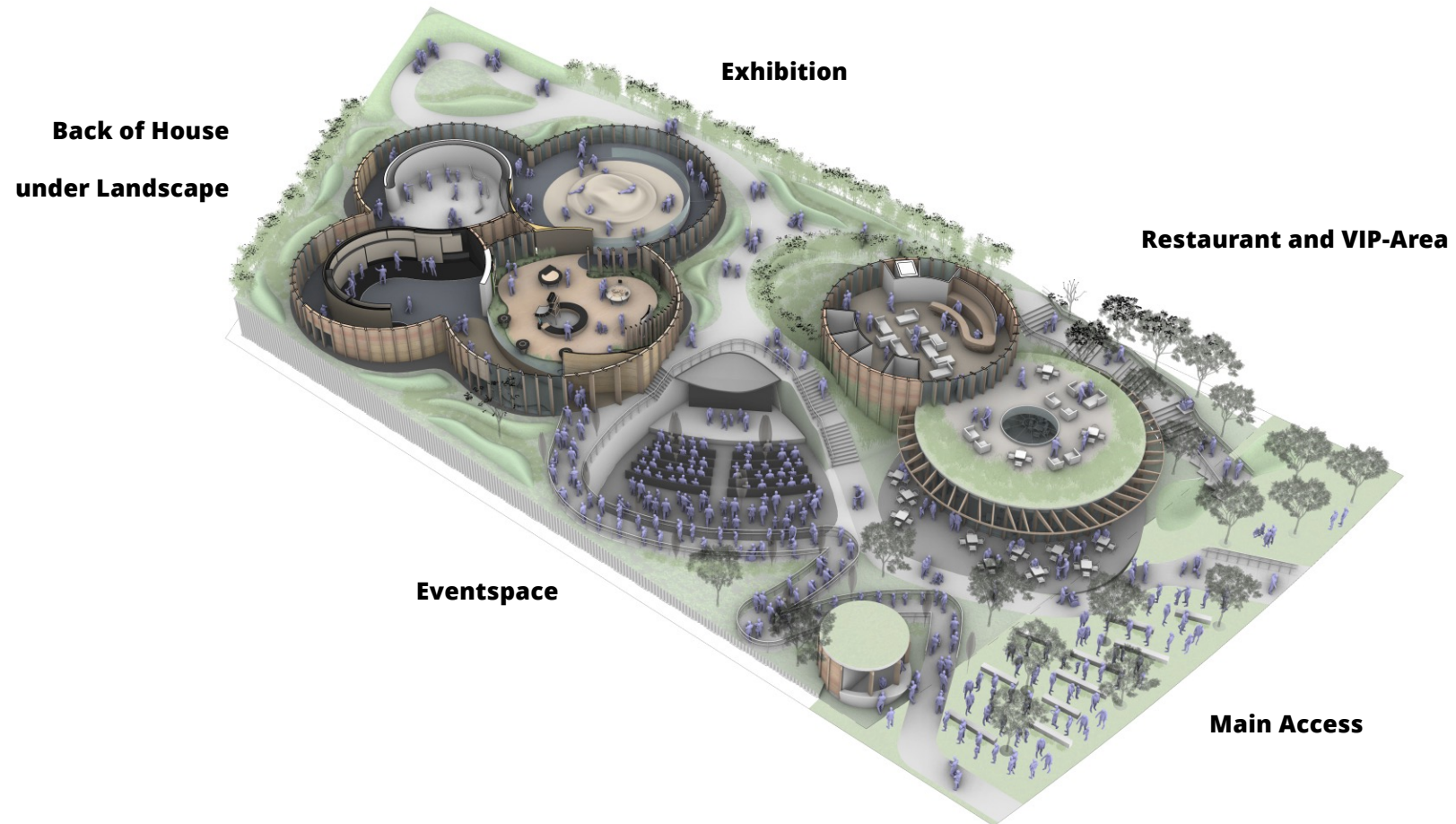
DESIGN SCHEME

**Serviceareas as Plinth -
the entire Plot as experience**



MASSING SCHEME DEVELOPMENT

VISITOR JOURNEY



CIRCULAR CONSTRUCTION

Materiality and Assembly

RESTAURANT



VIP-LOUNGE



EVENTSPACE



INTEGRATION OF ARCHITECTURE AND EXHIBITION



EXHIBITION



Arbeitsgemeinschaft:

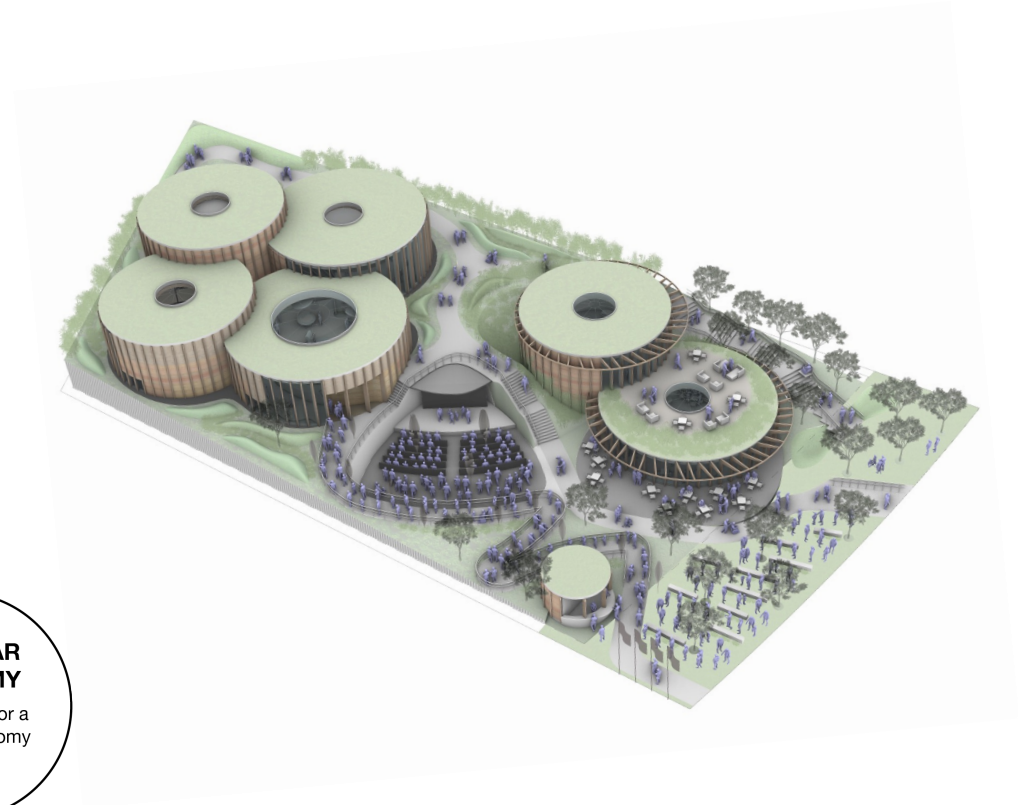
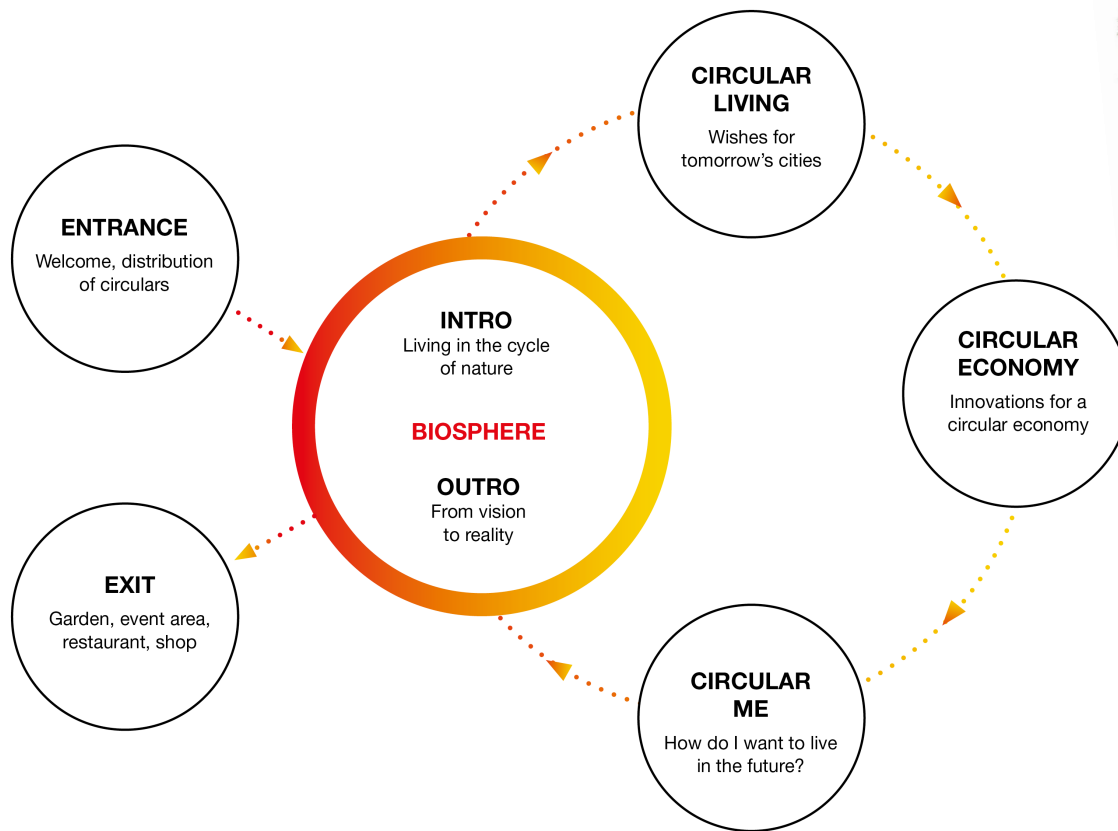
**facts
and
fiction**



In Kooperation mit:

LAVA
LABORATORY FOR
VISIONARY
ARCHITECTURE

CIRCULAR NARRATIVE



LET'S GO

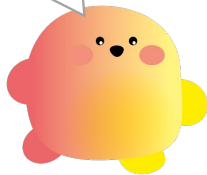


BIOSPHERE

Discover the cycles
of nature.

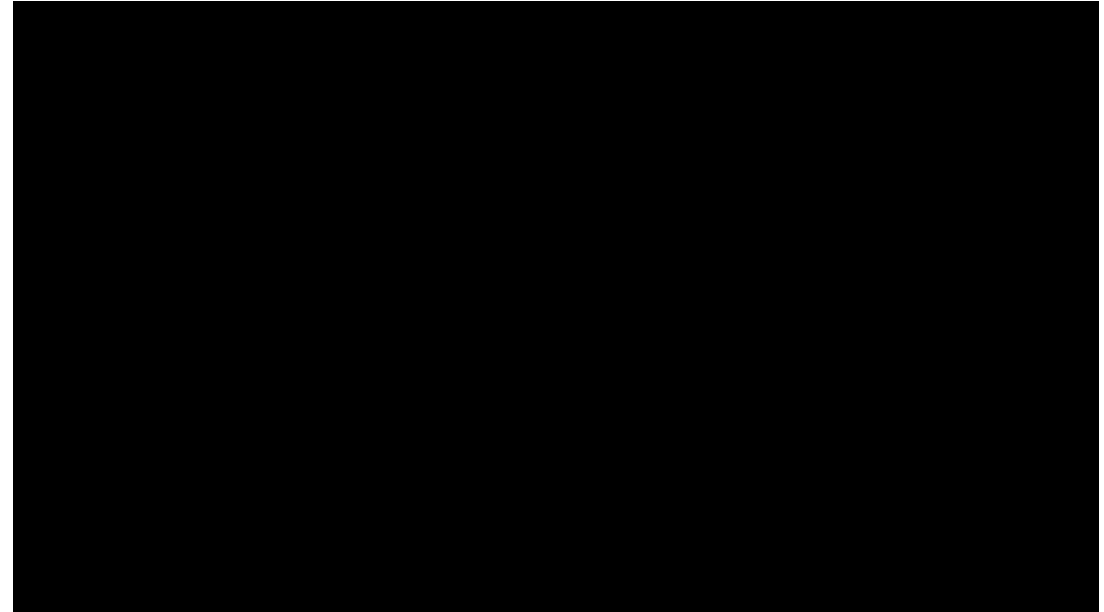
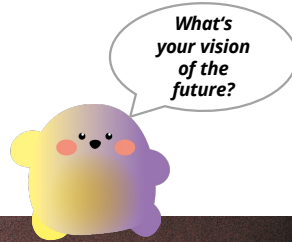


*Look, in nature
everything is
connected by
cycles!*



IMMERSIVE SPACES

**Dive into circular worlds,
guided by the Circulars.**

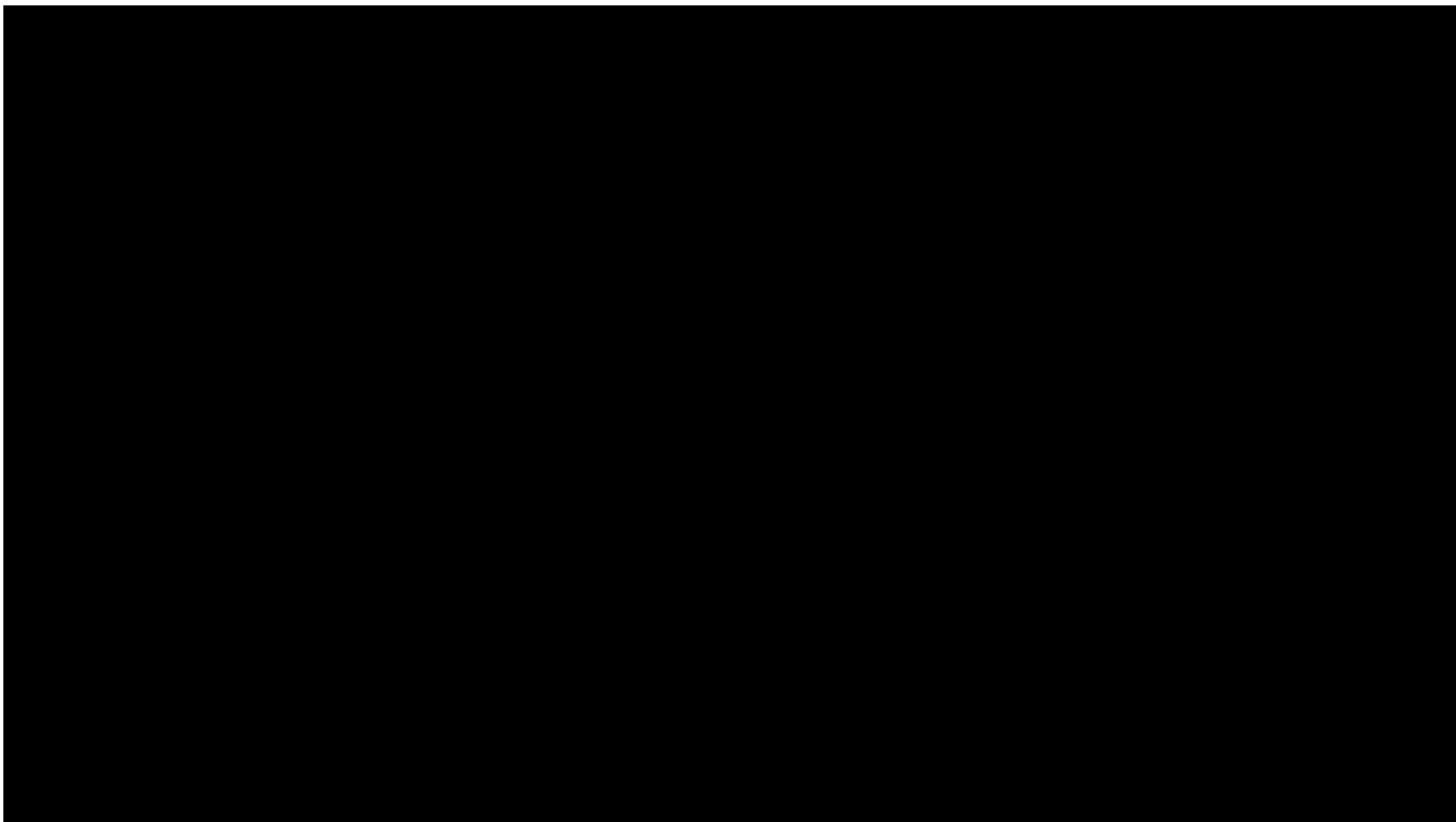


FROM VISION TO REALITY.



Wa! – What do we
want to look at
first?







CONTACT

© **facts and fiction GmbH 2023**

www.factsfiction.de | info@factsfiction.de

Cologne

Anna-Schneider-Steig 2
50678 Köln
+49 (0)221.95 15 30-0

Berlin

Borussiastraße 19
12103 Berlin
+49 (0)30.78 95 93 872

Contact Person:

Freya Paintner
freya.paintner@factsfiction.de

All published content, layout and graphics of the presentation of facts and fiction are protected by copyright. facts and fiction reserves all rights to the reproduction, distribution, modification and expansion of content, layout and graphics.

Arbeitsgemeinschaft:

**facts
and
fiction**



In Kooperation mit:

LAVA
LABORATORY FOR
VISIONARY
ARCHITECTURE